

FRUIT & VEGETABLE PACK HOUSE

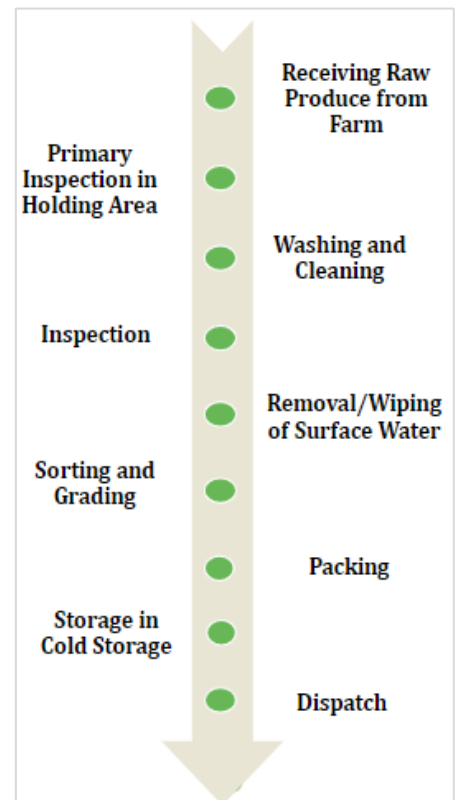
Project Description: Pack house is applicable to handling and processing for all horticulture produce viz-fresh fruits, vegetables etc. for exports as well as local market. A packing house is a facility where fruits and vegetable are received and processed prior to distribution to market. Bulk fruits and vegetable are delivered to the plant via trucks or wagons, where it is dumped into receiving bins and washed, graded & sorted for quality and size.

Raw Material: Apples, Oranges, Pomegranate, Sapota, Mango, Guava, Potato, Onion, Brinjal, Tomato, and the like.

Market: A packhouse facility prepares and packs the fresh fruits and vegetables as per the target market needs. Post-harvest treatments as well as quality standards are monitored to make produce suitable for export market as well as local market. Healthy, safe and good quality produce are always on top in food business sector.

Machines & Equipment: Feeding Cum Unloading Conveyor – Brush Washing – Ozone Water Washing – Air Dryer with Air Knife – Wax Applicator – Electronic Grading Machine – Shrink Wrapping & Labeler.

Minimum Viable Plant Capacity	—	2000 Kg/Hr
Plant and Machinery Cost (approx.)	—	1 – 1.5 Cr
Minimum Viable Project Cost (approx.)	—	5 -6 Cr
Operational Days /Annum	—	300 days with 20Hr/day
Area required (approx.)	—	1000-1500 m ²



Final Products:

Local Market Product



Export Market Product

